

INCIDENT FACTS

REPORT #:
22MI040

REPORT DATE:
March 7, 2024

INCIDENT DATE:
March 28, 2022

WORKER:
60-year-old

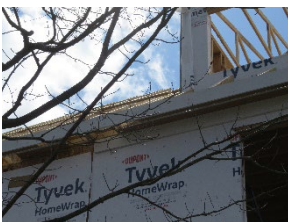
INDUSTRY:
Finish Carpentry
Contractors

OCCUPATION:
Carpenter

EVENT TYPE:
Fall



Location where the carpenter was standing prior to the fall.



Location where the carpenter fell from, view from the ground.

Carpenter Dies from Fall from 3rd Floor of New Construction Home

SUMMARY

A 60-year old carpenter died when he fell 20 feet from the 3rd floor of a new construction home. He was working on a single-family home being constructed on an empty 0.33-acre waterfront lot. The project started January 2022. The company usually worked on home remodel projects and new construction was an exception.

On the day of the incident the carpenter and a co-worker were the only two onsite. The plan for that morning was to begin sheeting the home's 3rd floor roof. The carpenter and the co-worker were working on straightening the roof overhang. The co-worker left the roof, where he was working with the carpenter, to better visualize the straightness of the roof overhang from the perspective of a lower level. The carpenter was standing on the exterior wall between the roof trusses; he was not wearing fall protection.

The carpenter's fall was not witnessed. The co-worker heard a crash and observed the carpenter lying on the ground. The co-worker ran down the stairs out of the home and to where the carpenter was laying on the compacted dirt. He called 911 and began CPR, continuing to perform chest compressions until the Fire Department arrived. The Fire Department and EMS continued to render medical aid until the carpenter was pronounced dead on the scene.



Ground view of the 3rd floor and roof overhang of the new construction home. An arrow points to where the carpenter was standing prior to the fall.

REQUIREMENTS

Employers must:

- Ensure that fall protection is used whenever employees are exposed to a fall of 6 feet or more above a lower level. See [1926.501\(b\)\(13\)](#)
- Train employers to recognize fall hazards and methods to minimize identified fall hazards. See [1926.503\(a\)\(1\)](#)

RECOMMENDATIONS

MIFACE investigators concluded that, to help prevent similar occurrences, employers should:

- Provide and ensure the proper use of fall protection equipment.
 - Perform unannounced fall protection spot checks to ensure workers maintain 100% tie-off.
- Conduct pre-shift safety meetings to determine if workers will be doing tasks that put them at risk of falls and reinforce the need for fall protection.
- Ensure their accident prevention plan is always on-site and available.
- Effectively enforce their written safety program.

[MIFACE](#) (Michigan Fatality Assessment and Control Evaluation), Michigan State University (MSU) Occupational & Environmental Medicine, 909 Fee Road, 117 West Fee Hall, East Lansing, Michigan 48824-1315.

This information is for educational purposes only. This MIFACE report becomes public property upon publication and may be printed verbatim with credit to MSU. Reprinting cannot be used to endorse or advertise a commercial product or company. All rights reserved.

MSU is an affirmative-action, equal opportunity employer.

[Email](#) | [Twitter](#) | [Facebook](#) | [Website](#)

CITATIONS

MIOSHA Construction Safety and Health Division issued the following serious citations at the conclusion of its investigation.

- Serious: 1926.501(b)(13): CS PART 45, FALL PROTECTION REF 408.44502
 - Each employee engaged in residential construction activities 6 feet (1.8 m) or more above lower levels shall be protected by guardrail systems, safety net system, or personal fall arrest system unless another provision in paragraph (b) of this section provides for an alternative fall protection measure. Exception: When the employer can demonstrate that it is infeasible or creates a greater hazard to use these systems, the employer shall develop and implement a fall protection plan which meets the requirements of paragraph (k) of 1926.502.
 - Workers engaged in framing activities were exposed to a greater than 6-foot fall hazard.
- Serious: 1926.503(a)(l): CS PART 45, FALL PROTECTION REF 408.44502
 - The employer shall provide a training program for each employee who might be exposed to fall hazards. The program shall enable each employee to recognize the hazards of falling and shall train each employee in the procedures to be followed in order to minimize these hazards.
 - Workers engaged in framing activities were not able to recognize the hazards associated with falls.

[MIFACE](#) (Michigan Fatality Assessment and Control Evaluation), Michigan State University (MSU) Occupational & Environmental Medicine, 909 Fee Road, 117 West Fee Hall, East Lansing, Michigan 48824-1315.

This information is for educational purposes only. This MIFACE report becomes public property upon publication and may be printed verbatim with credit to MSU. Reprinting cannot be used to endorse or advertise a commercial product or company. All rights reserved.

MSU is an affirmative-action, equal opportunity employer.

[Email](#) | [Twitter](#) | [Facebook](#) | [Website](#)