

INCIDENT FACTS

REPORT #:

22MI001

REPORT DATE:

September 8, 2023

INCIDENT DATE:

January 11, 2022

WORKER:

29-year-old

INDUSTRY:

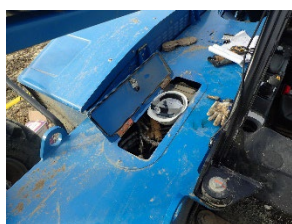
Structural Steel and
Precast Concrete
Contractors

OCCUPATION:

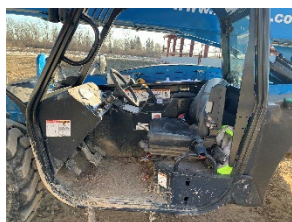
Steel Worker

EVENT TYPE:

Crushed by



Deck below the telehandlers boom.



Operators cab.

Steel Worker Crushed Operating Extendable Boom Forklift

SUMMARY

A 29-year-old steel worker was crushed by the boom arm of the extendable boom forklift he was operating. He worked for his employer, a commercial and industrial firm for design and build services, for 7 months. He received training for equipment operation during his first month of employment with the company. The training he received consisted of visual aids including videos, the manufacturers equipment guide, an in-person training presentation, hands-on training time with the equipment, and a written test. The equipment operators permit following completion of the training was issued for 3-years.

On the day of the incident, the steel worker was moving and staging insulated metal panels using a Genie® GTH™-1056 telehandler at a municipal garage building site. The Genie GTH-1056 telehandler has a maximum lift capacity of 10,000 pounds, maximum lift height of 56 feet 7 inches, and maximum reach forward of 42 feet. The telehandler features all-terrain tires, a diesel fuel engine with 30-gallon tank capacity, and a gross weight of 31,900 pounds. The boom raise time is 15 seconds and the boom lower time is 12 seconds.

The steel worker had stopped the unloaded telehandler and set the e-brake but did not turn the machine off. With his left leg between the steering wheel and seat, and right leg knelt on the seat, he reached out to the right of the operators seated position placing his body between the deck and boom of the machine. While reaching, he contacted the boom control joystick pushing it forward and to the right which lowered and fully extended the telehandlers telescopic boom crushing his head and chest between the deck and boom. The machine was found with the steel worker under the telescopic boom fully extended and down pressure applied which caused a belly or sag in the boom. It is speculated that he was reaching for items that were stored on the deck of the machine and had shifted out of reach from the seat. He was pinned for an unknown amount of time before he was found by others working onsite. Police and EMS arrived at the job site, and the steel worker was declared dead at the scene.



Operators seated position; boom control joystick is circled.

REQUIREMENTS

Employers must:

- Employers must ensure that each powered industrial truck operator is competent to operate a power industrial truck safely. See [1910.178\(1\)](#)

RECOMMENDATIONS

MIFACE investigators concluded that, to help prevent similar occurrences, employers should:

- Install a guard or window, approved by the manufacturer, to cover the opening to the right of the operators seated position.
- Prohibit the use of the deck area under the boom to be used to store materials.
- Develop procedures and train employees on how to prevent the boom from lowering if it is necessary to enter the area.

CITATIONS

No citations were issued by the MIOSHA Construction Safety and Health Division.

[MIFACE](#) (Michigan Fatality Assessment and Control Evaluation), Michigan State University (MSU) Occupational & Environmental Medicine, 909 Fee Road, 117 West Fee Hall, East Lansing, Michigan 48824-1315.

This information is for educational purposes only. This MIFACE report becomes public property upon publication and may be printed verbatim with credit to MSU. Reprinting cannot be used to endorse or advertise a commercial product or company. All rights reserved.

MSU is an affirmative-action, equal opportunity employer.

[Email](#) | [Twitter](#) | [Facebook](#) | [Website](#)