

## INCIDENT FACTS

### REPORT #:

22MI032

### REPORT DATE:

May 18, 2024

### INCIDENT DATE:

March 29, 2022

### WORKER:

67-year-old

### INDUSTRY:

Contractor

### OCCUPATION:

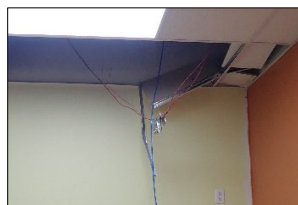
Master Electrician

### EVENT TYPE:

Fall (from elevation)



The room where the work was being performed.



The low voltage wiring.

## Master Electrician Dies after Falling from Ladder

### SUMMARY

A 67-year-old master electrician and business owner suffered a fatal fall from a ten-foot step ladder. He was a contractor on a multi-employer jobsite for a new construction build.

On the day of the incident, he was advancing low voltage wiring above the 10-foot drop ceiling. To access the area above the drop ceiling he was using a Werner 10-foot fiberglass stepladder. The Werner ladder had a 300-pound capacity and a top standing level of 7 feet 8 inches giving the ladder a maximum reach of about 14 feet. He was working alone at the time of the incident. It is suspected that the ladder was not fully opened at the time of the incident. While working above the ceiling, he fell backwards off the ladder and struck his head on the corner of a table before coming to rest on the marble floor. He was found unconscious by a bystander. There were no witnesses to the fall.

Emergency medical services were called, and first-aid was administered by EMS. He was transported to the hospital and later pronounced deceased.



The ladder in the suspected position that the fall occurred from is pictured above.

### REQUIREMENTS

Employers must:

- Provide a training program for each employee who uses a ladder. The program shall enable each employee to recognize hazards related to the ladder and shall train each employee in the procedures to be followed to minimize these hazards. See [408.41112\(1\)](#)

### RECOMMENDATIONS

**MIFACE investigators concluded that, to help prevent similar occurrences, employers should:**

- Ensure employees are trained on ladder fall prevention techniques – train workers to recognize ladder-related hazards to minimize incidents:
  - Choose the right ladder for the task.
  - Inspect for damages or issues before each use – do not use if defects are detected.
  - Ensure person using a ladder has the capability of carrying out physical tasks (grip strength, balance, etc.).
  - Ensure ladder is located on a firm and level surface for stability.
  - When setting up the ladder, ensure the surrounding area is uncluttered and free of any obstructions.
  - Never lean or reach away from the ladder, descend and move the ladder.
  - Maintain three points of contact at all times when ascending/descending the ladder.
  - Have a work partner to hold and steady the ladder.
- Provide fall protection and the right equipment for the job, including the right kinds of ladders, scaffolds, and safety gear.

### CITATIONS

No citations were issued by the MIOSHA Construction Safety and Health Division.

[MIFACE](#) (Michigan Fatality Assessment and Control Evaluation), Michigan State University (MSU) Occupational & Environmental Medicine, 909 Fee Road, 117 West Fee Hall, East Lansing, Michigan 48824-1315.

This information is for educational purposes only. This MIFACE report becomes public property upon publication and may be printed verbatim with credit to MSU. Reprinting cannot be used to endorse or advertise a commercial product or company. All rights reserved.

MSU is an affirmative-action, equal opportunity employer.

[Email](#) | [Twitter](#) | [Facebook](#) | [Website](#)