

JANUARY 11, 2016

2014
ANNUAL REPORT
TRACKING SILICOSIS &
OTHER WORK-RELATED LUNG
DISEASES IN MICHIGAN



2014 ANNUAL REPORT TRACKING SILICOSIS & OTHER WORK-RELATED LUNG DISEASES IN MICHIGAN

Silicosis & Other Work-Related Lung Disease Surveillance Program

TABLE OF CONTENTS

SUMMARY	1-2
BACKGROUND	2
PROCEDURES	2-3
RESULTS	4-19
DISCUSSION	19-21
REFERENCES	22

Michigan State University Department of Medicine

West Fee Hall
909 Fee Road, Room 117
East Lansing, MI 48824
517.353.1846

Kenneth D. Rosenman, MD
Mary Jo Reilly, MS

Michigan Department of Licensing & Regulatory Affairs (LARA)

PO Box 30649
Lansing, MI 48909
517.284.7777

Martha B. Yoder
Director MIOSHA

There are many resources available to help employers, employees, health care professionals and others understand more about work-related lung disease. Links to these resources can be found at: www.oem.msu.edu.

Acronyms

AB Asbestosis

COPD Chronic
Obstructive Pulmonary
Disease

ED Emergency
Department

LARA MI Department of
Licensing & Regulatory
Affairs

MIOSHA Michigan
Occupational Safety &
Health Administration

NAICS North American
Industrial Classification
System

NIOSH National Institute
for Occupational Safety &
Health

OLDS Other Work-
Related Lung Diseases

PEL Permissible Exposure
Limit



**This report was funded
by the National
Institute for
Occupational Safety &
Health, under
cooperative agreement
U60-OH008466.**

We sincerely appreciate the commitment of those health care providers who understand the public health significance of diagnosing a patient with an occupational illness, as well as the Michigan employees who took the time to share their experiences about their work and subsequent development of work-related lung disease.

Summary

This is the 23rd annual report on silicosis in Michigan. This is the 3rd year of the expansion of the annual report to include surveillance data on the magnitude and nature of all work-related lung diseases in Michigan. In 2011, we expanded surveillance of silicosis in Michigan to include other lung disease, including asbestosis, work-related hypersensitivity pneumonitis, hard metal lung disease, minor pneumoconiosis, and emerging work-related lung diseases. Work-related asthma has always been covered under a separate annual report.



The annual average incidence rate of silicosis among African American males is 7.3 cases per 100,000 workers. Among white males the rate is 1.4 cases per 100,000 workers. Within specific counties in Michigan, the annual average incidence rates of silicosis range between two to 370 times higher for African American males than the rates for white males.

Part 56 of the Michigan Public Health Code requires reporting of all known or suspected occupational illnesses or work-aggravated health conditions to the Michigan Department of Licensing & Regulatory Affairs within 10 days of discovery.

Summary, continued

- ◆ From 1985-2014, 1,164 silicosis cases have been identified through the Michigan tracking system.
- ◆ On average since 2000, 23 new cases of silicosis were reported to LARA each year.
- ◆ We estimate there were 67-139 adults in Michigan with silicosis who were not reported in 2014.
- ◆ Asbestos-related lung changes are the most common work-related lung disease in Michigan, identified through hospital discharge data, B-Readers, the courts and other sources.
- ◆ 150 cases of Other Work-Related Lung Disease (OLDS) were identified in 2014; chemical irritation, chemical pneumonitis and smoke inhalation were among the conditions reported.
- ◆ Three MIOSHA enforcement inspections conducted in 2014 at two workplaces where an OLDS case was reported revealed exposures to cobalt below OSHA permissible limits, yet these exposures resulted in employees seeking medical care at local hospitals for hard metal lung disease.

Background

In 1988, the State of Michigan instituted a tracking program for silicosis with financial assistance from NIOSH. In 2011, surveillance was expanded to include Other Work-Related Lung Diseases (OLDS). This is a joint project of MIOSHA and Michigan State University, Department of Medicine, Division of Occupational and Environmental Medicine.

The reporting of an index patient is a sentinel health event that may lead to the identification of employees from the same facilities who are also at risk of developing silicosis or OLDS. The goal is to prevent work-related lung disease through the identification and workplace follow-up of these index patients.

Work-Related Lung Disease Tracking Procedures

There are four main activities related to occupational lung disease surveillance in Michigan: identifying patients, interviewing patients and collecting relevant medical records, conducting workplace inspections, and sharing the overall results and lessons learned with industry, employees and other stakeholders.

IDENTIFY PATIENTS

Patients are identified through mandatory reporting of any known *or suspected* occupational illnesses, including silicosis and other work-related lung diseases.

SOURCES TO IDENTIFY PATIENTS IN MICHIGAN

- ◆ **Health Care Providers** Private practice, working for industry, NIOSH-certified “B” readers
- ◆ **Hospitals** International Classification of Disease 9th Revision (ICD-9) Silicosis (502), Asbestosis (501), Hypersensitivity Pneumonitis (495), COPD (496), Chronic Bronchitis (491), Emphysema (492)
- ◆ **Workers’ Compensation Agency**

Work-Related Lung Disease Tracking Procedures, continued

- ◆ **Poison Control Center**
- ◆ **Reports from Co-Workers or MIOSHA Field Staff** confirmed by a health care provider
- ◆ **Death Certificates**
- ◆ **Michigan 3rd Judicial Court** for asbestos-related disease
- ◆ **Mine Safety and Health Administration**
- ◆ **Michigan Cancer Registry** for mesothelioma
- ◆ **Clinical Laboratories** for specific IgE allergy testing

INTERVIEW PATIENTS

Once patients are identified, a letter is sent asking them to participate in a telephone interview. Afterwards, medical records are requested, including chest x-rays and pulmonary function test results.

CLASSIFICATION OF WORK-RELATED LUNG DISEASE

A physician who is board-certified in internal and occupational/environmental medicine and also is a NIOSH certified B-reader reviews medical evidence which may include interview, medical records, breathing tests and chest x-rays. In addition, for silicosis and asbestosis the following criteria are applied:

SILICOSIS

- 1) History of silica exposure.
and
- 2) Chest x-ray interpretation with rounded opacities of 1/0 or greater profusion in the upper lobes.
Or
- 1) A biopsy report of lung tissue showing the characteristic silicotic nodule.

ASBESTOSIS

- 1) History of asbestos exposure.
and
- 2) Chest x-ray interpretation showing linear changes in the lower lobes and/or pleural thickening.

WORKPLACE INSPECTION

After the patient interview is completed, MIOSHA determines whether a workplace enforcement inspection will be conducted. During an inspection co-workers are interviewed to determine if other individuals are experiencing similar breathing problems from exposure to the agent. Any workers reporting breathing problems are sent a letter advising them to see their doctor. Chest x-rays are reviewed if the company performs periodic x-ray surveillance. Air monitoring for any suspected agent is conducted. The company's health and safety program and its Injury and Illness Log are reviewed. After the investigation is complete, a report of air sampling results and any recommendations is sent to the company and made available to workers. A copy of the report is also sent to the reporting physician.

OTHER FOLLOW UP ACTIVITIES

Outreach, educational activities, and recommendations may be developed. An annual report summarizing the activity is completed. Brochures or other materials may be developed to address specific emergent issues identified.

**Results—
SILICOSIS, ASBESTOS-RELATED & OTHER WORK-RELATED LUNG DISEASES**

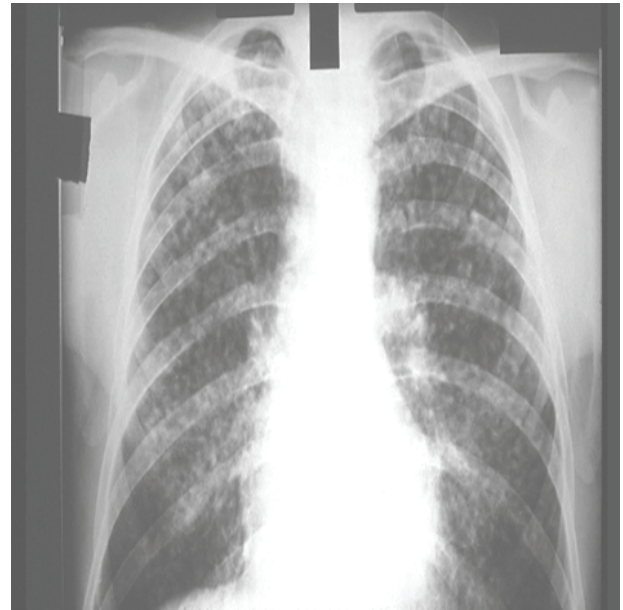
The following sections report results in this order: **silicosis** surveillance in Michigan from 1985-2014, **asbestos-related lung disease and mesothelioma**, and **all other OLDS surveillance** for calendar year 2014.

REPORTS OF SILICOSIS

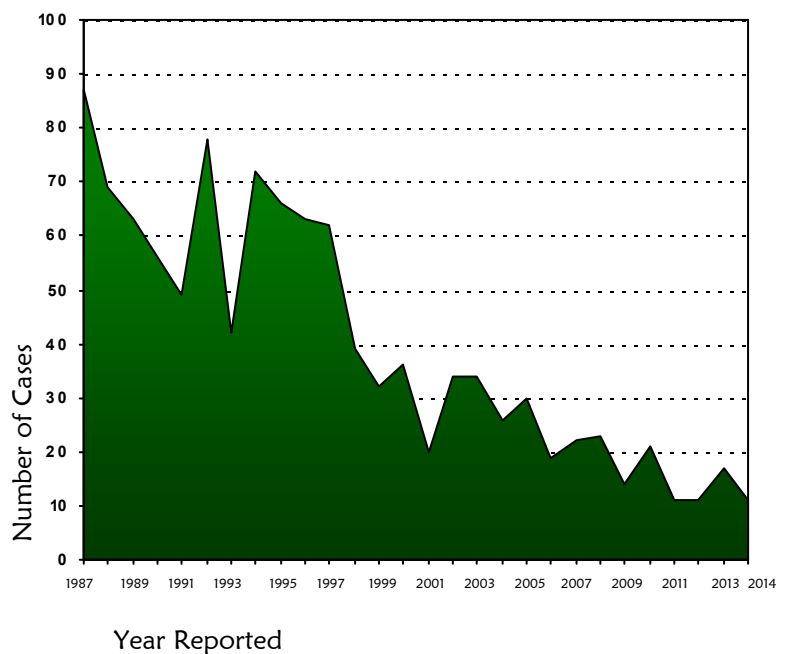
Table 1 shows that 1,164 people were confirmed with silicosis between 1985 - 2014. Figure 1 shows the number of confirmed silicosis cases by year, for 1987 - 2014. Figure 2 shows the overlap of reporting sources.

**TABLE 1
Year and Reporting Source for 1,164
Confirmed Silicosis Cases: 1985-2014**

Initial Reporting Source*					
<u>YEAR</u>	<u>PR</u>	<u>HDC</u>	<u>DC</u>	<u>WC</u>	<u>ICFU</u>
85-87	0	67	35	42	0
1988	0	56	6	7	0
1989	7	40	9	4	3
1990	5	44	0	6	1
1991	5	37	1	6	0
1992	16	54	6	2	0
1993	6	31	1	4	0
1994	7	36	1	28	0
1995	26	35	3	2	0
1996	28	35	0	0	0
1997	13	48	1	0	0
1998	10	28	1	0	0
1999	5	25	1	1	0
2000	4	32	0	0	0
2001	8	11	1	0	0
2002	1	32	1	0	0
2003	8	26	0	0	0
2004	2	24	0	0	0
2005	4	26	0	0	0
2006	1	17	1	0	0
2007	2	19	0	1	0
2008	4	18	0	1	0
2009	1	12	1	0	0
2010	2	19	0	0	0
2011	0	11	0	0	0
2012	0	11	0	0	0
2013**	0	16	1	0	0
2014**	1	10	0	0	0
TOTAL	166	820	70	104	4



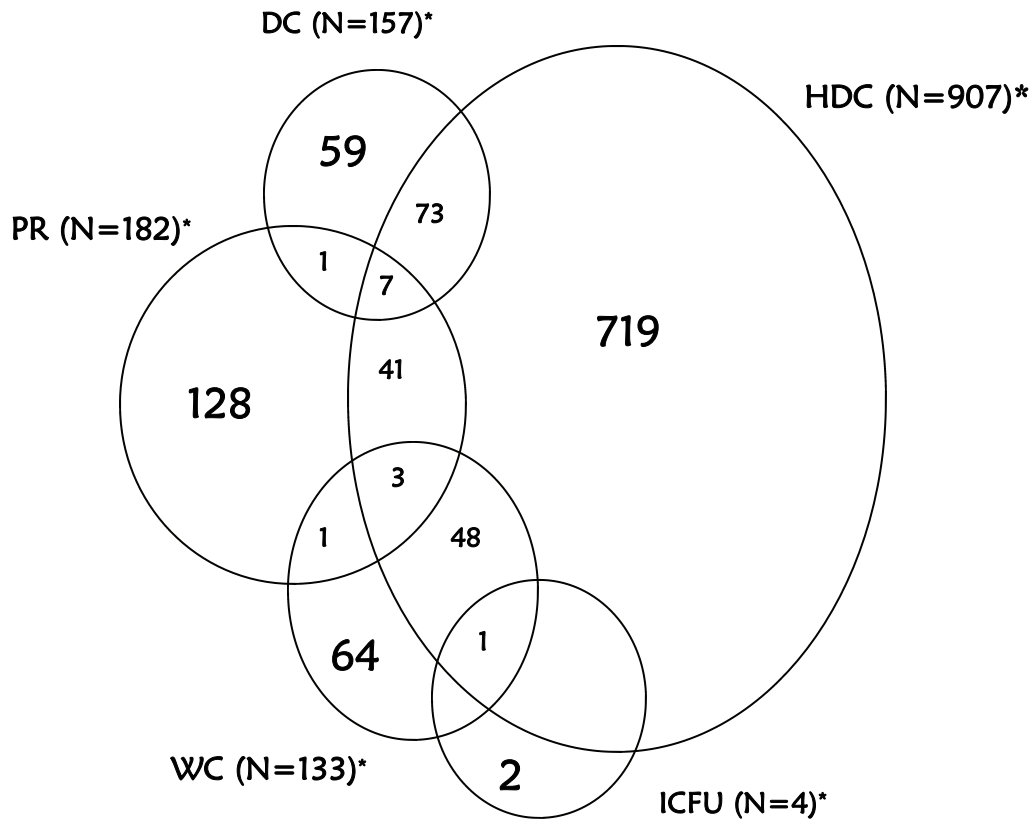
**FIGURE 1
Confirmed Silicosis Cases by Year Reported**



*PR- Physician Referral; HDC-Hospital Discharge ; DC-Death Certificate; WC-Workers' Compensation; ICFU-Index Case Follow-Up.

**Reports are still being processed for calendar years 2013 and 2014.

FIGURE 2
Overlap of Reporting Sources for 1,164
Confirmed Silicosis Patients: 1985-2014



Hospitals are the most frequent reporters of workers with occupational lung diseases.

Based on capture-recapture analysis we estimate that although on average we receive 23 reports of silicosis a year, there are an additional 67-139 cases that are diagnosed each year but are not reported. [2]

*N's represent the total number for that source.
 Reporting Source Codes: HDC=Hospital Discharge Data; PR=Physician Referral; DC=Death Certificate; WC=Workers' Compensation; ICFU=Index Case Follow Up.
 There was also an overlap of HDC-DC-WC for 13 individuals; an overlap of HDC-PR-WC-DC for one individual; an overlap of WC-DC for two individuals; and an overlap of HDC-DC-ICFU for one individual.

Demographics-Silicosis

GENDER

- ◆ Women 27 (2%)
- ◆ Men 1,137 (98%)

YEAR OF BIRTH

- ◆ Range 1888 - 1971
- ◆ Average 1924

RACE

- ◆ Caucasian 673 (58%)
- ◆ African American 449 (39%)
- ◆ Alaskan/American Ind. 1 (<1%)
- ◆ Asian 2 (<1%)
- ◆ Other 30 (3%)
- ◆ Unknown 9 (1%)

AVERAGE ANNUAL INCIDENCE RATE

- ◆ African American 7.3 per 100,000
- ◆ Caucasian 1.4 per 100,000

The average annual incidence rate for African Americans is 5.2X greater than that of Caucasians.

Numerator is the average number of silicosis cases by race for 1987-2011. Denominator Source: 2000 Census population data by race, age 40 and older.

Medical Results-Silicosis

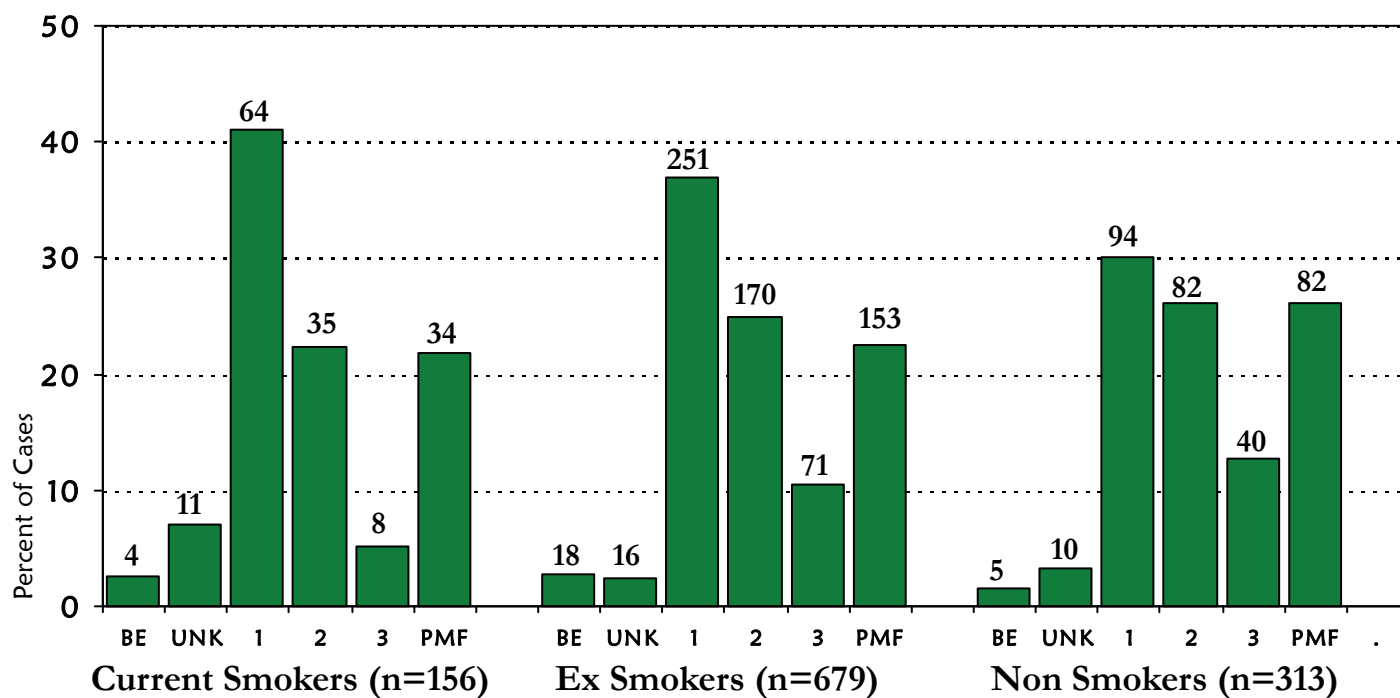
Overall, 825 (70.9%) of the people with silicosis had simple silicosis and 273 (23.5%) had progressive massive fibrosis. Twenty-eight (2.4%) silicotics had normal x-rays with lung biopsy evidence. Thirty-eight (3.3%) individuals had x-ray reports which were consistent with silicosis but the actual radiograph could not be obtained to classify.

For the 1,148 silicosis cases with known history, 313 (27.3%) of the people with silicosis never smoked cigarettes, 679 (59.1%) had quit, and 156 (13.6%) were still smoking. No information was available on 16 individuals. Figure 3 shows the distribution of x-ray results according to the International Labor Organization (ILO) classification and smoking status. Non-smokers tended to have more severe silicosis.

This latter finding may be an artifact of our reporting system, which is mainly based on reports of hospitalized individuals. Non-smoking individuals with simple silicosis are less likely to be symptomatic and hospitalized and therefore less likely to have been reported to the surveillance system.

Tables 2 and 3 show the distribution of percent predicted forced vital capacity (FVC) and the ratio of forced expiratory volume in one second (FEV₁) to FVC by x-ray and cigarette smoking status. Approximately 60% of people with silicosis had reduced breathing function, either restrictive or obstructive. Obstructive changes (Table 3) were found in two-thirds of the individuals who had ever smoked cigarettes and among half of the individuals who had never smoked cigarettes. A more comprehensive analysis of spirometry results was published in 2010. [3]

FIGURE 3
Severity of X-Ray Results* by Smoking Status for
Confirmed Silicosis Cases: 1985–2014**



*BE = Biopsy Evidence; UNK = Unknown; 1-3 = International Labor Organization categorization system for grading pneumoconises; Category 1 = 1/0, 1/1, 1/2; Category 2 = 2/1, 2/2, 2/3; Category 3 = 3/2, 3/3, 3/+; PMF = Progressive Massive Fibrosis.

**Total number of individuals: 1,148. Unknown smoking status for 16 individuals.

Medical Results-Silicosis

TABLE 2

Percent Predicted Forced Vital Capacity (FVC) by X-Ray Results and Cigarette Smoking Status for Confirmed Silicosis Cases: 1985-2014

X-Ray Results*	Percent Predicted FVC***					
	<60%		60-79%		≥80%	
	Ever Smoked	Never Smoked	Ever Smoked	Never Smoked	Ever Smoked	Never Smoked
	%	%	%	%	%	%
Biopsy Evidence	7	--	43	67	50	33
Unk Severity	41	40	36	20	23	40
Category 1	24	31	35	29	41	40
Category 2	29	38	36	33	35	29
Category 3	31	68	40	14	29	18
PMF	38	38	33	32	29	30
Total**	29	39	36	30	35	32

*Biopsy Evidence if no x-ray available; International Labor Organization categorization system for grading pneumoconioses: Cat 1= 1/0, 1/1, 1/2; Cat 2= 2/1, 2/2, 2/3; Cat 3= 3/2, 3/3, 3+; PMF=Progressive Massive Fibrosis.

**Total number of individuals: 736. Information was missing for 428 individuals.

***Percentages represent the proportion of individuals in each x-ray result category, within smoking status category.

TABLE 3

Ratio of Forced Expiratory Volume in 1 Second (FEV₁) to Forced Vital Capacity (FVC) by X-Ray Results and Cigarette Smoking Status for Confirmed Silicosis Cases: 1985-2014

X-Ray Results*	FEV ₁ /FVC***							
	≤40%		41-59%		60-74%		≥75%	
	Ever Smoked	Never Smoked	Ever Smoked	Never Smoked	Ever Smoked	Never Smoked	Ever Smoked	Never Smoked
	%	%	%	%	%	%	%	%
Biopsy Evidence	--	50	14	--	50	50	36	--
Unk Severity	11	--	11	--	22	80	56	20
Category 1	10	2	21	4	36	35	33	60
Category 2	4	4	22	15	41	29	34	52
Category 3	5	5	17	--	12	33	66	62
PMF	16	6	32	22	30	35	22	37
Total**	9	4	23	11	34	35	34	50

*Biopsy Evidence if no x-ray available; International Labor Organization categorization system for grading pneumoconioses: Cat 1= 1/0, 1/1, 1/2; Cat 2= 2/1, 2/2, 2/3; Cat 3= 3/2, 3/3, 3+; PMF= Progressive Massive Fibrosis.

**Total number of individuals: 705. Information was missing for 459 individuals.

***Percentages represent the proportion of individuals in each x-ray result category, within smoking status category.

Location in State



Table 4 shows the annual average incidence rates of silicosis among the working population, by race and county where there was at least one case in that county. Yellow-highlighted rates are for counties where both white and African American cases were reported. The highest rates were among African American males in Shiawassee (296 cases per 100,000), Muskegon (131 cases per 100,000), Saginaw (44 cases per 100,000), and Monroe (23 cases per 100,000). The incidence of African American silicosis cases was approximately 5 times greater than Caucasian males. More information about health disparities and occupational lung disease, particularly silicosis, can be found in our Fall 2014 PS News newsletter (V25N4), at: www.oem.msu.edu. Figure 4 shows the counties of the companies at which the patients' silica exposure occurred; Muskegon, Wayne and Saginaw were the main counties.

TABLE 4
Average Annual Incidence Rate of Silicosis
Among Michigan Workers by Race and County of Exposure: 1987-2012

County	Caucasian* Males			African American** Males			County	Caucasian* Males			African American** Males		
	County Pop'n	#	Rate	County Pop'n	Rate	County Pop'n		#	Rate	County Pop'n	#	Rate	
Allegan	20850	2	0.4	275	—	Lake	2817	2	2.7	251	—		
Alpena	7388	22	11.5	8	—	Lapeer	18176	1	0.2	226	—		
Arenac	4168	1	0.9	62	—	Lenawee	20192	4	0.8	573	—		
Baraga	1815	1	2.1	78	—	Livingston	32610	3	0.4	111	—		
Barry	12360	3	0.9	34	—	Mackinac	2761	1	1.4	6	—		
Bay	23674	7	1.1	226	—	Macomb	156926	24	0.6	3233	7	8.3	
Benzie	3898	1	1.0	9	—	Manistee	5999	3	1.9	67	—		
Berrien	30479	7	0.9	3594	3	3.2	Marquette	14199	14	3.8	224	—	
Branch	9525	4	1.6	288	—	Mason	6683	1	0.6	41	—		
Calhoun	25345	25	3.8	2650	13	18.9	Menominee	6054	11	7.0	2	—	
Charlevoix	5942	3	1.9	5	—	Midland	16605	1	0.2	128	—		
Chippewa	7286	2	1.1	616	—	Monroe	29452	7	0.9	497	3	23.2	
Delta	9045	3	1.3	5	—	Montcalm	12433	3	0.9	335	—		
Dickinson	6419	1	0.6	5	—	Montmorency	2957	1	1.3	3	—		
Eaton	20377	3	0.6	781	—	Muskegon	30132	113	14.4	3564	121	130.6	
Genesee	69596	10	0.6	13423	5	1.4	Oakland	216359	14	0.2	20085	6	1.1
Gladwin	6615	1	0.6	8	—	Ottawa	41916	4	0.4	270	1	14.2	
Gogebic	4353	3	2.7	22	—	Saginaw	36097	63	6.7	5936	68	44.1	
Gd Traverse	16451	1	0.2	57	—	St. Clair	33209	5	0.6	623	1	6.2	
Gratiot	8356	1	0.5	371	—	St. Joseph	12266	4	1.3	251	1	15.3	
Hillsdale	9857	7	2.7	36	—	Sanilac	9753	2	0.8	23	—		
Ingham	41166	10	0.9	3987	—	Schoolcraft	2121	1	1.8	18	—		
Iosco	7280	1	0.5	30	—	Shiawassee	14737	3	0.8	26	2	295.9	
Iron	3531	1	1.1	28	—	Tuscola	12334	1	0.3	108	—		
Jackson	31380	3	0.4	2685	2	2.9	Van Buren	15129	2	0.5	808	—	
Kalamazoo	39985	3	0.3	3004	—	Washtenaw	47535	6	0.5	5758	—		
Kent	93136	14	0.6	6768	2	1.1	Wayne	236472	123	2.0	134974	158	4.5
Keweenaw	639	1	6.0	1	—	Wexford	6478	2	1.2	6	—		

*Rate per 100,000 among Caucasian men age 40+. Numerator is the average number of Caucasian males with silicosis for the years 1987 – 2012; denominator is the 2000 Census population data for Caucasian men age 40 and older, by county. In 2000, there were 1,730,017 Caucasian males 40 years and older living in Michigan.

** Rate per 100,000 among African American men age 40+. Numerator is the average number of African American males with silicosis for the years 1987 – 2012; denominator is the 2000 Census population data for African American men age 40 and older, by county. In 2000, there were 219,076 African American males 40 years and older living in Michigan.

Type of Industry-Silicosis

Table 5 shows the Michigan industries by NAICS codes, where exposure to silica occurred from 1985 to 2014. The predominant industries were in manufacturing (85%), construction (8%) and mining (4%). Most of the manufacturing jobs were in iron foundries. Exposure to silica is still occurring in foundries (Figures 5 and 6). In 2007, MIOSHA began an initiative to identify and inspect all silica-using foundries in the state. Forty-seven foundries were inspected. Personal air monitoring for silica was conducted in 43 of the 47 facilities; 28 companies had silica levels below the MIOSHA PEL and 15 were above the PEL.

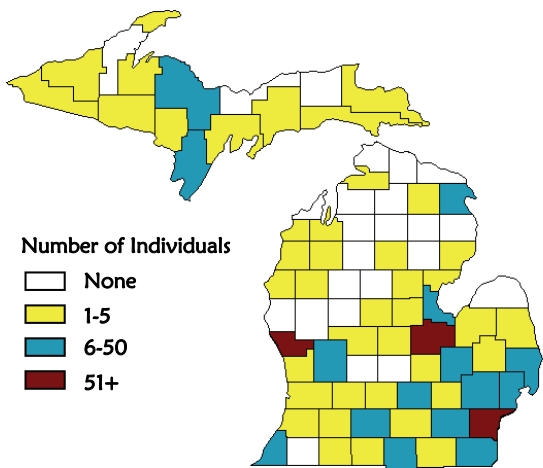
Although silicosis typically occurs after a long duration of exposure to silica, some patients develop silicosis after a relatively short period of time because of the severity of that exposure. The average year of hire is 1950, ranging from 1910 to 2007. Two individuals began working in the 2000s, five began working in the 1990s, 22 in the 1980s, 78 in the 1970s and 176 in the 1960s. The average number of years worked at a silica-exposed job was 27.4 years.

TABLE 5
Primary Industrial Exposure for Confirmed Silicosis Patients: 1985-2014

INDUSTRY (2002 NAICS)		#	%
11	Agriculture, Forestry, Fishing, & Hunting	2	0.2
21	Mining	44	3.8
22	Utilities	1	0.1
23	Construction	98	8.4
31-33	Manufacturing	990	85.1
42	Wholesale Trade	2	0.2
44-45	Retail Trade	3	0.3
48-49	Transportation & Warehousing	7	0.6
56	Administrative & Support & Waste Management	2	0.2
62, 81	Health Care & Social Assistance	7	0.6
92	Public Administration	4	0.3
00	Unknown	4	0.3
Total		1,164	100.1*

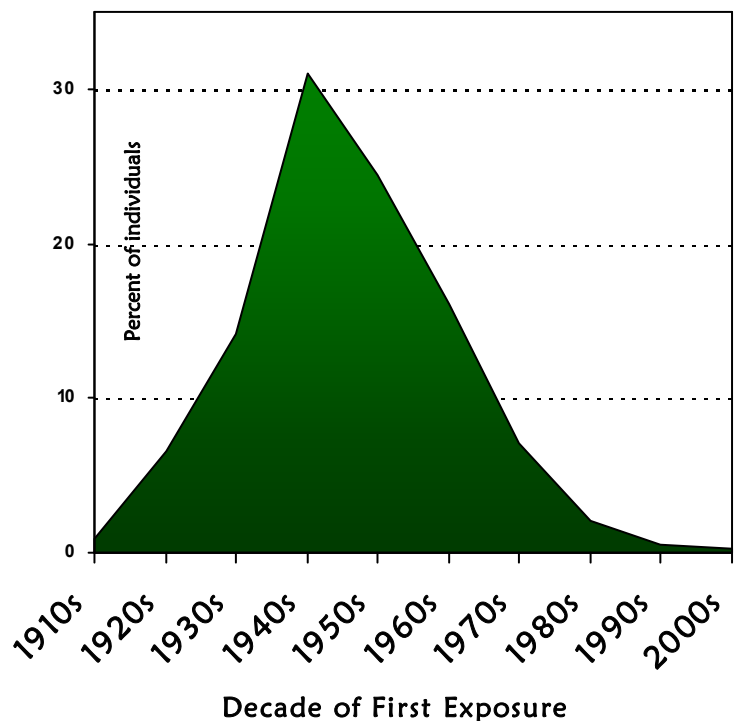
*Percentage does not add to 100 due to rounding.

FIGURE 4
Distribution of Confirmed Silicosis Cases by County of Exposure: 1985-2014*



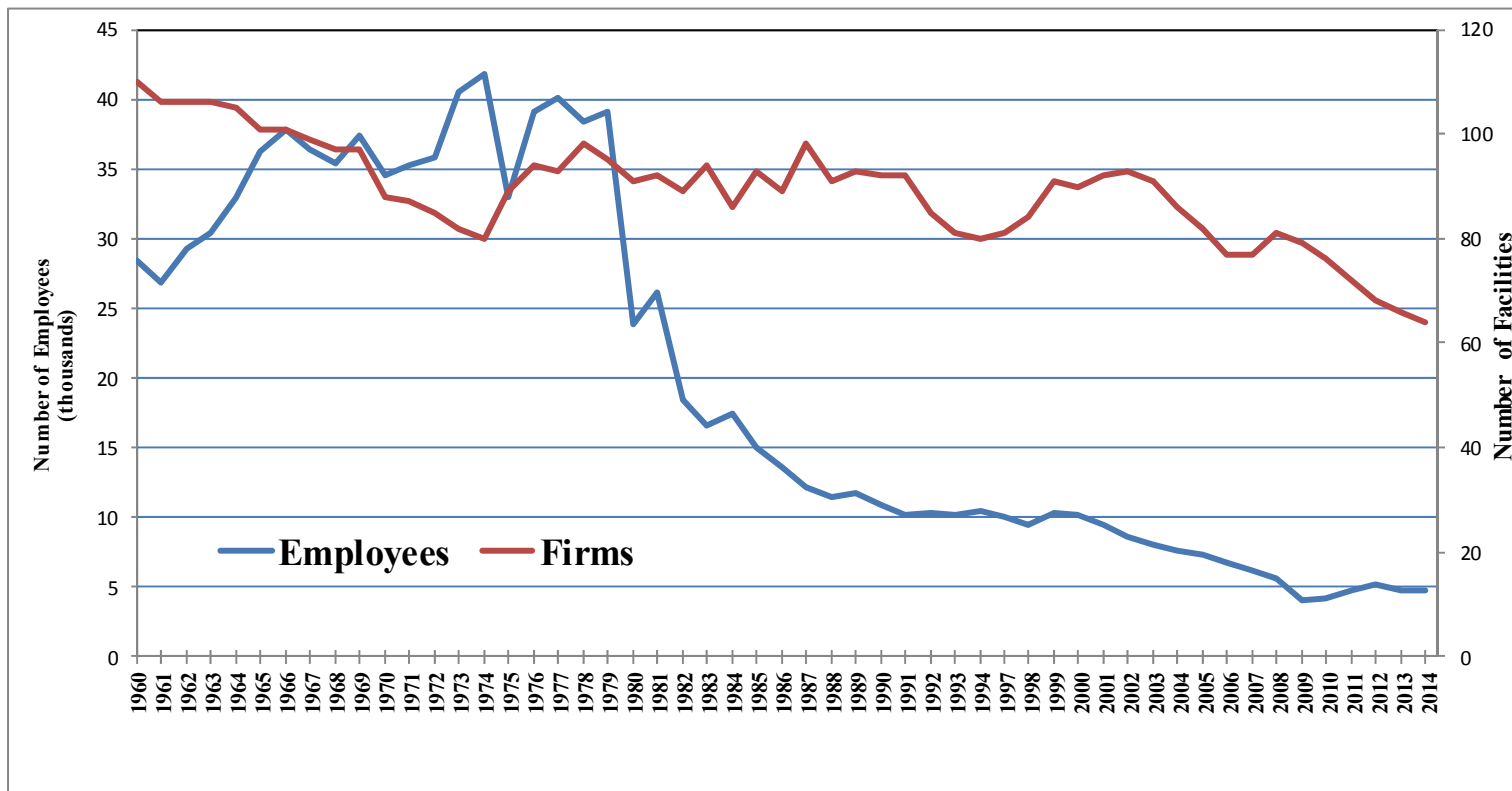
*Seventy-three individuals were exposed to silica out-of-state, and 26 individuals had an unknown county of exposure.

FIGURE 5
Distribution of Decade when Silica Exposure Began for Confirmed Silicosis Cases: 1985-2014*



*Decade of first exposure was unknown for 68 individuals with silicosis.

FIGURE 6
Michigan Ferrous Foundries 1960-2014



Industrial Hygiene Results-Silicosis

The 1,164 individuals with silicosis were exposed to silica in 480 facilities (Table 6). Inspections were performed by MIOSHA at 89 (18.5%) of these facilities. One hundred fifty-three (31.9%) facilities were no longer in operation, 68 (14.2%) were located out of state, 26 (5.4%) facilities no longer used silica, 71 (14.8%) workplaces were in the construction industry, eight (1.7%) were covered by the Mine Safety and Health Administration jurisdiction, and for 63 (13.1%), the specific location where the silica exposure occurred was unknown. There are two facilities scheduled for inspection.

Air sampling for silica was conducted in 63 of the 89 facilities inspected (Table 7). Thirty-seven of 63 (58.7%) facilities were above the National Institute for Occupational Safety and Health (NIOSH) recommended exposure limit for silica.

Twenty-three of the 63 (36.5%) were above the enforceable MIOSHA permissible exposure limit (PEL) for silica. Another two (3.2%) companies were above the MIOSHA standard for beryllium and one company was above the MIOSHA standard for silica and silver.

Only eight of the 71 (11.3%) facilities where the medical surveillance program was evaluated provided medical screening for silicosis for its workers that included a periodic chest x-ray interpreted by a "B" certified reader. Three (4.2%) companies provided periodic chest x-rays that were not interpreted by a "B" certified reader. Twenty-one (29.6%) only performed pre-employment testing, 27 (38.0%) provided no medical surveillance, and 18 (25.4%) performed annual or biennial pulmonary function testing without chest x-rays.

Industrial Hygiene Results-Silicosis

Sandblasting-Silicosis

Three hundred thirteen of the 873 individuals for whom sandblasting history was known (35.9%) stated they had done sandblasting as part of their work.

Proposed Silica Standard

On September 12, 2013, Federal OSHA proposed a comprehensive standard for exposure to silica. The full proposal published in the Federal Register is 232 pages, although the actual proposed standard is only 18 pages (www.osha.gov/FedReg_oshapdf/FED20130912.pdf). The other 200+ pages cover background, regulatory history, benefits and economic impact. The Review of Health Effects Literature and Preliminary Quantitative Risk Assessment is another 483 pages, which includes 84 pages of references (www.osha.gov/silica/Combined_Background.pdf).

Hearings on the proposed standard were held in Washington, DC for 14 days beginning March 18, 2014. OSHA is currently reviewing all the comments and has not yet proceeded with the promulgation of the standard. See the 2012 Annual Report—Tracking Silicosis & Other Work-Related Lung Diseases in Michigan, for a description of the Michigan data that was submitted as public comment in support of the standard.



TABLE 6

Status of Facilities Where 1,164 Confirmed Silicosis Cases were Exposed to Silica: 1985-2014

Inspection Status	Cases		Facilities	
	#	#	%	
Inspection Completed	488	89	18.5	
Scheduled for Inspection	2	2	0.4	
MSHA* Jurisdiction	17	8	1.7	
Facility Out-of-Business	420	153	31.9	
Facility Out-of-State	72	68	14.2	
Facility No Longer Uses Silica	31	26	5.4	
Building Trade: No Inspection	71	71	14.8	
Unknown	63	63	13.1	
Total	1,164	480**	100.0	

*MSHA= Mine Safety and Health Administration.
**Four facilities are related to one silicosis case's work history.

TABLE 7

MIOSHA Inspections of 89 Facilities of Silicosis Cases Exposed to Silica: 1985-2014

	Companies	
	#	%
Air Sampling Performed	63	
Above NIOSH* Rec Std for Silica	37	58.7
Above MIOSHA Enforceable Std for Silica	23	36.5
Medical Surveillance Evaluated	71	
Periodic Chest X-Rays with a B Reader	8	11.3
Periodic Chest X-Rays without a B Reader	3	4.2
Pre-employment Testing Only	21	29.6
No Medical Surveillance	27	38.0
Periodic Pulmonary Function Testing	18	25.4

*NIOSH National Institute for Occupational Safety & Health.

Asbestos-Related Lung Disease and Mesothelioma

The following section reports the results of **asbestos-related lung disease and mesothelioma**.

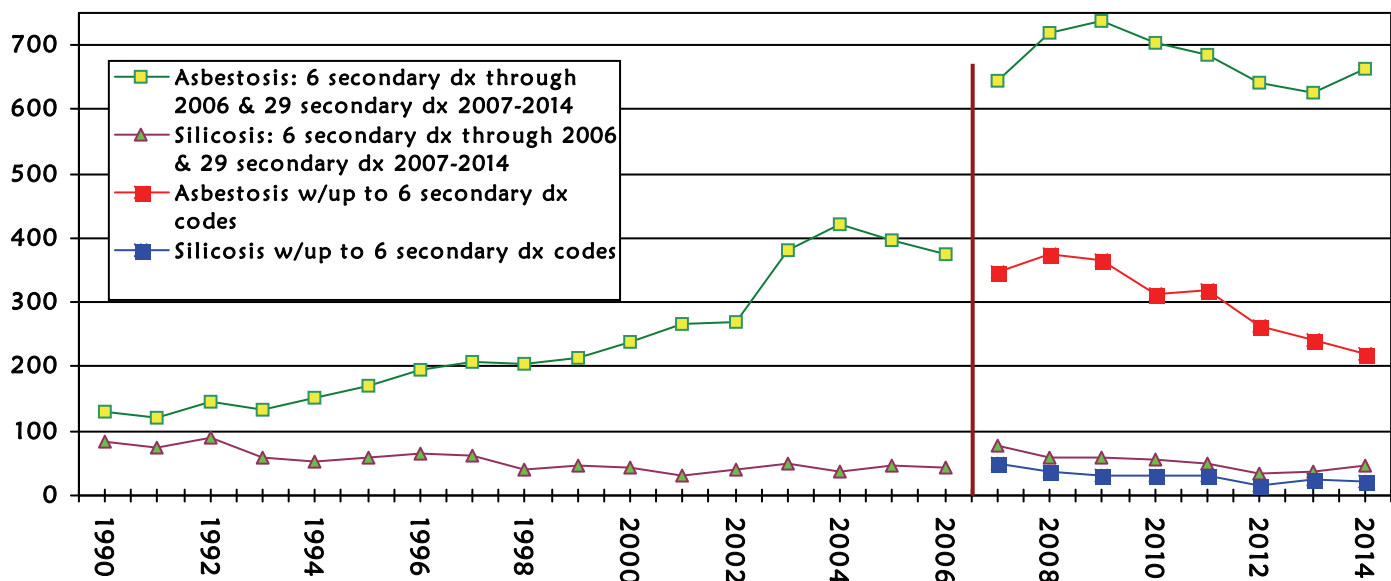
Figure 7 shows the number of individuals hospitalized in Michigan with asbestosis and silicosis from 1990 to 2014. Repeat admissions of the same individual within each calendar year are excluded from these counts of inpatient Hospital Discharge Data (HDC). For most of these patients, pneumoconiosis was not the primary discharge diagnosis listed on the discharge record. From 1993 to 2006, there has been a steady increase in the number of hospitalizations for asbestosis; from 2007-2014 the large increase in reports is due to the availability of additional secondary discharge diagnosis codes from up to six secondary codes through 2006 to up to 29 secondary diagnosis codes beginning in 2007 (Figure 7). The horizontal red line in Figure 7 for 2007 - 2014 shows that the number of asbestosis cases would have decreased if only up to six secondary discharge diagnoses had continued to be used.

Regulations to control asbestos exposure were not promulgated until the early 1970s and were not widely implemented until the 1980s. Given the 25-year or greater latency period from the time of first exposure to the development of asbestos-related

radiographic changes, the cases being identified now represent exposures from these earlier less-regulated years. The trend we are seeing in Michigan is consistent with national data published in the NIOSH 2014 eWorld publication: Work-Related Lung Disease Surveillance System (eWorld), refer to the section on Asbestosis at: <http://wwwn.cdc.gov/eWoRLD>. [4]

Payment source from the Michigan Health and Hospital Association (MHA) is the source of data displayed in Figure 8. Medicare is the primary payment source for hospitalizations for these dust diseases of the lung. WC insurance is very rarely the source of payment, which is consistent with previous reports in both Michigan and New Jersey that the majority of patients with pneumoconiosis never apply for WC insurance. [1,5] It should be noted that if the anticipated payment source was initially Workers' Compensation but then changed to a non-work-related payment source, the record in the MHA file would still indicate the initial source after the patient was discharged, or vice-versa. Again, for this discharge data of payment source, there is increased availability of secondary discharge diagnosis codes since 2007.

FIGURE 7
Hospital Discharges of Inpatients with Asbestosis & Silicosis in Michigan:
1990 - 2006 & 2007 - 2014



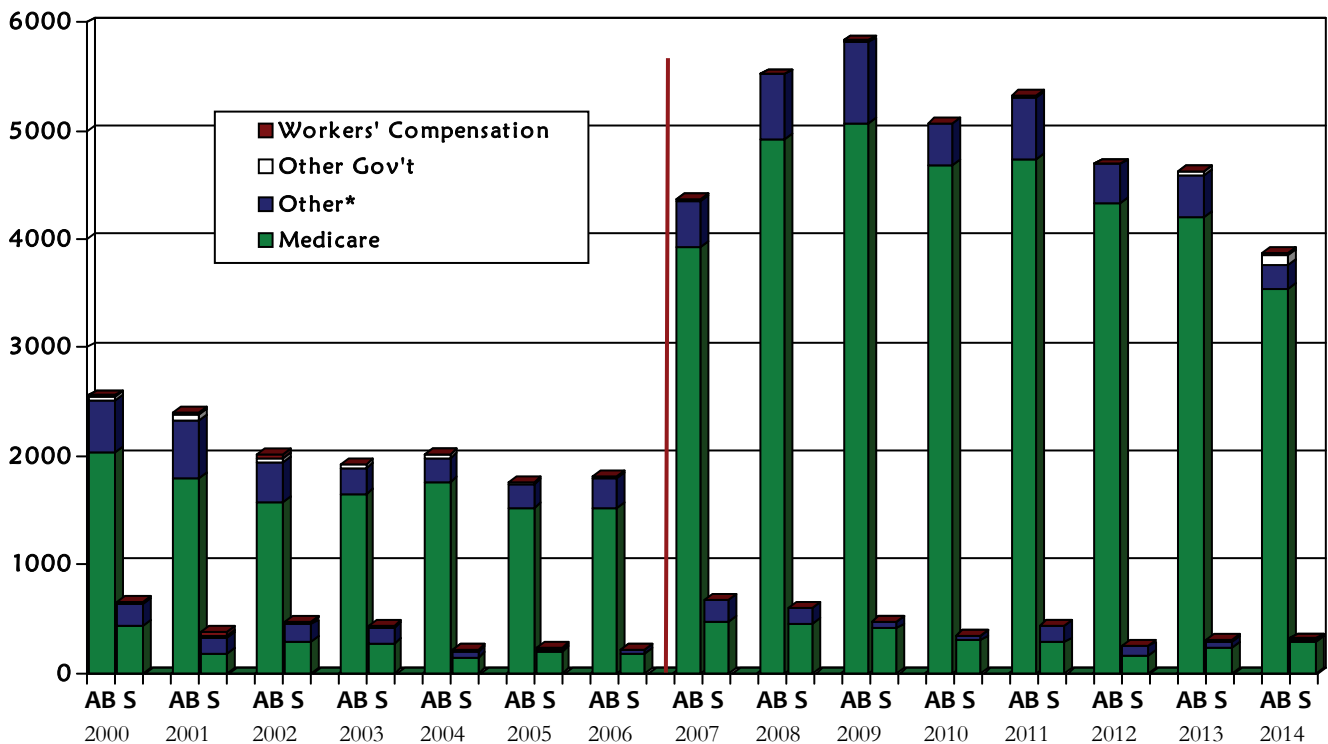
In addition to identifying asbestos-related disease from HDC inpatient data, occupational disease reports submitted to LARA constitute another large source of reports. In fact, asbestos-related lung disease is the most common dust disease reported to LARA (Figure 9), through individual physicians certified as B-Readers, death certificates and the Michigan Courts. The newer OLDS surveillance initiative is yet another source of reports on patients with asbestos-related lung disease (see page 17). In 2014, for example, eight cases of asbestos-related lung disease were identified through physician review of medical records. Some of these patients reported may overlap with those reported in the HDC data (Figure 7). The total number of asbestos-related cases would therefore be less than the combined total of HDC cases (Figure 7) along with the cases reported directly to LARA (Figure 9). It should be noted that the asbestos-related cases in Figure 7, Figure 9 and Table 8 may or may not overlap—they each rep-

resent a different way to obtain a count of asbestos-related disease from these three different sources.

B-READER SURVEY

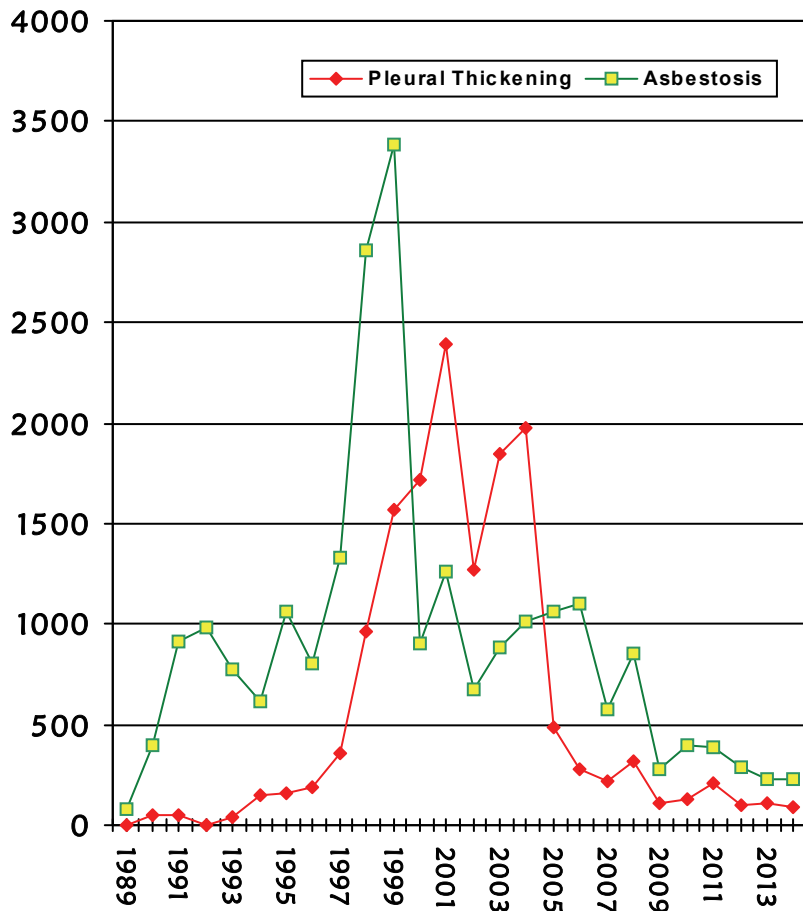
In 1995, there were 16 B-readers in Michigan. Today, there are only six physicians in Michigan who are certified as B-readers. Table 8 shows the number of B-readers, chest x-rays that were reviewed, and x-rays that showed evidence of asbestos-related lung disease, with pleural and parenchymal changes separately and combined. Since 1995, about 20% of the x-rays reviewed showed evidence of occupational disease, ranging from a low of 191 (4%) of 4,419 x-rays reviewed in calendar year 2012, to a high of 3,640 (34%) of 10,575 x-rays reviewed in calendar year 1999. Table 8 is based on an annual survey that the B-readers in Michigan complete. The numbers of reports listed in the survey are greater than the number of occupational disease reports received from B-readers.

FIGURE 8
Days Hospitalized by Payment Source at Discharge for Asbestosis & Silicosis in Michigan: 2000-2006 & 2007-2014



*Other includes: Medicaid, HMOs, PPOs, Other Insurance, Self-Pay and No-Charge payment sources. AB=Asbestosis, S=Silicosis.

FIGURE 9 Asbestos-Related Cases Reported from B-Readers, Death Certificates and the 3rd Judicial Court: 1989-2014



Mesothelioma

The association between exposure to asbestos and the risk of developing mesothelioma was first reported in the medical literature in 1943. [6] The only other exposure associated with the risk of developing mesothelioma has been the therapeutic, not diagnostic, use of x-rays. The percentage of patients with mesothelioma who have a history of occupational asbestos exposure is lower in studies that are based on review of medical records compared to studies based on a complete work history where 90% of mesothelioma has been attributed to asbestos exposure. [7] Among cohorts of asbestos-exposed workers, up to 10% of deaths have been attributed to mesothelioma.

The Michigan Cancer Registry collects data on the demographics of mesothelioma in Michigan. From 1997 through 2012, there were 1,859 Michigan residents reported to the Michigan Cancer Registry with invasive mesothelioma.

TABLE 8 Results of Annual Survey* of B-Readers in Michigan: 1995-2014

YEAR	# B- Readers	Pleural Changes Only	Parenchymal Changes-W/ & W/out Pleural Changes	Pleural or Parenchymal Changes	Total X-Rays Reviewed	% of Total w/ any Changes
1995	16	--	--	1,406	8,165	17
1996	16	--	--	837	4,825	17
1997	16	446	522	968	6,652	15
1998	16	--	--	3,111	--	--
1999	18	1,045	2,595	3,640	10,575	34
2000	16	532	297	829	10,591	8
2001	17	1,211	1,316	2,527	11,149	23
2002	16	683	905	1,588	7,189	22
2003	11	1,440	1,289	2,729	10,589	26
2004	--	--	--	--	--	--
2005	9	502	343	845	3,060	28
2006	10	391	127	518	5,382	10
2007	9	201	130	331	3,661	9
2008	10	337	320	657	4,757	14
2009	9	247	66	313	4,170	8
2010	6	202	45	247	2,804	9
2011	6	183	46	229	2,862	8
2012	6	139	52	191	4,419	4
2013	6	130	46	176	2,802	6
2014	6	127	56	183	3,765	5

*Actual chest radiograph interpretations were not submitted with the surveys.

Mesothelioma, continued

Figure 10 shows the number of men and women diagnosed with mesothelioma by year, from 1985 to 2012. Overall, approximately one quarter of the reports of mesothelioma occurred in women. In 2012, 16% of the 104 cases were women. Mesothelioma occurred predominantly among Caucasians (93.5%) compared to African Americans (5.6%). Approximately 1% were classified as “other” ancestry. In 2012, of the 60 new cases where race was known, 90% were Caucasian and 10% were African American.

Figure 11 shows the age at diagnosis separately for men and women. The peak age of occurrence of mes-

othelioma was for individuals 65 years and older for both men and women.

Figure 12 shows the distribution of the number of cases of mesothelioma among Michigan residents by county. The south-east-and central region of Michigan has the highest number of cases of mesothelioma. Figure 13 shows the average annual incidence rates of mesothelioma among Michigan residents by county. The counties with the highest rates are: Bay (2.5 per 100,000); Midland and Marquette (each with 1.9 per 100,000); St. Clair and Muskegon (each with 1.8 per 100,000); and Saginaw (1.7 per 100,000). The annual average mesothelioma incidence rate for 1998-2012 in Michigan was 1.1 cases per 100,000.

FIGURE 10
Number of Men and Women in Michigan Diagnosed with Mesothelioma: 1985-2012

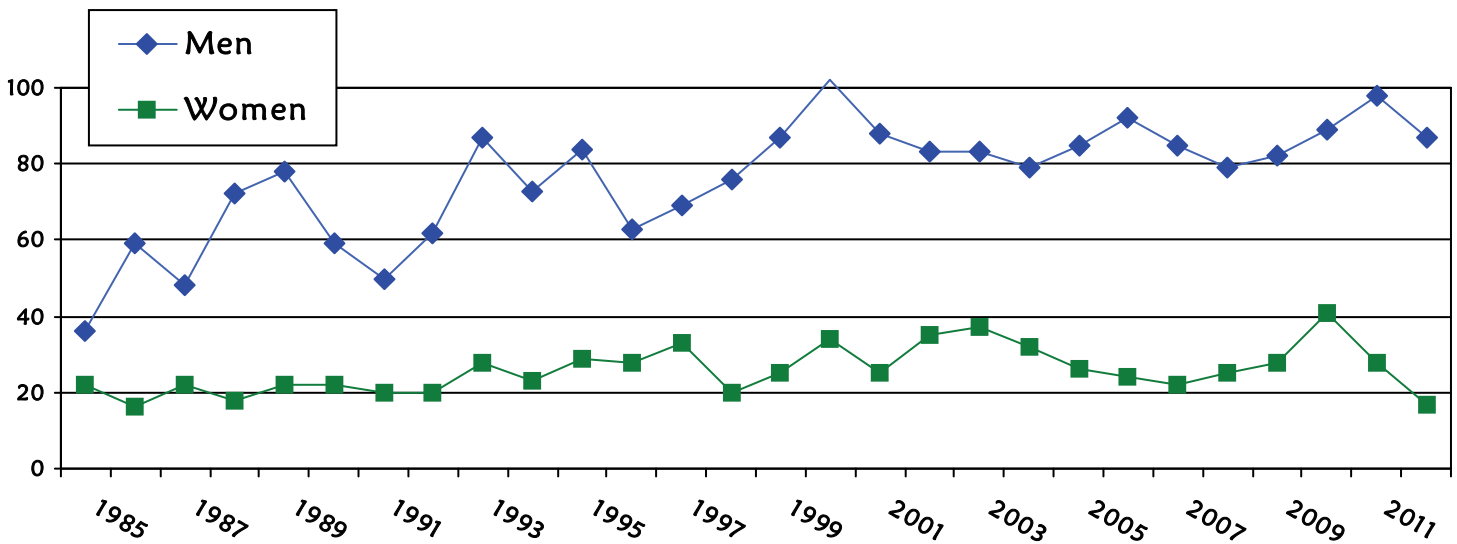


FIGURE 11
Cases of Mesothelioma in Michigan by Gender and Age at Diagnosis: 1985-2012

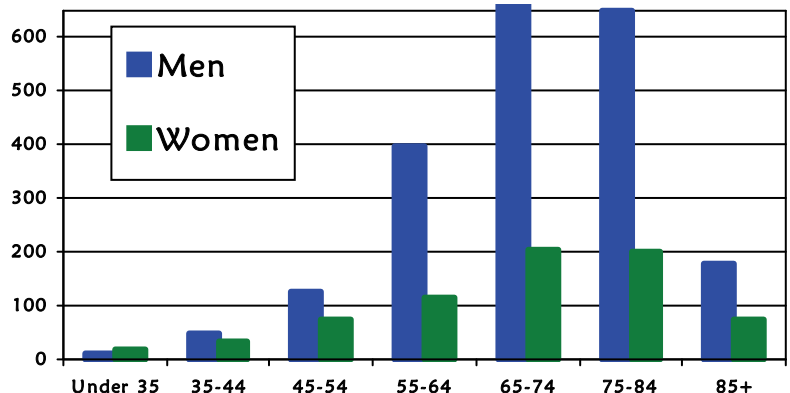


FIGURE 12

Distribution of MI Residents Diagnosed with Mesothelioma by County: 1998-2012

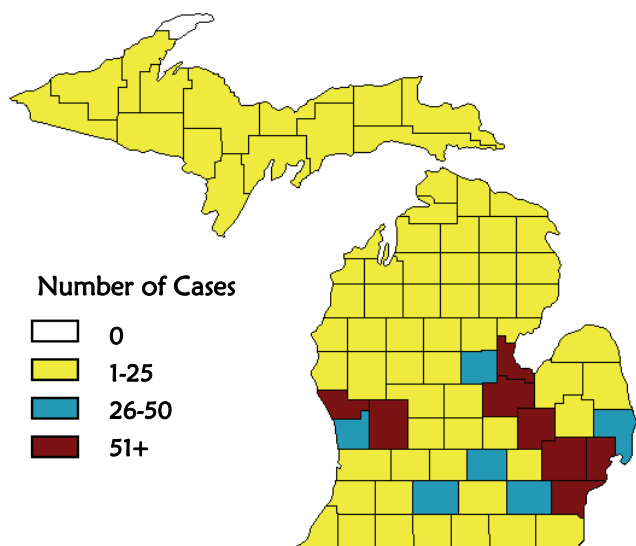
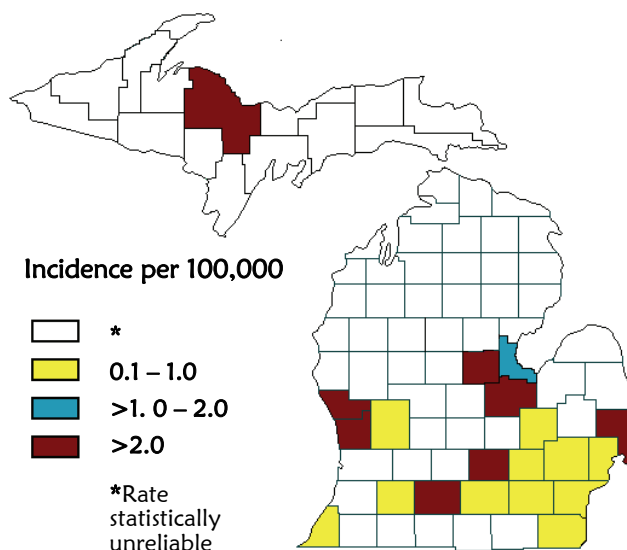


FIGURE 13

Age-Adjusted Incidence Rates of Mesothelioma Among Michigan Residents, by County



Other Work-Related Lung Diseases

2011 was the first year of data collection for other work-related lung diseases (OLDS). Other lung diseases from exposures in the workplace include breathing problems that are not necessarily chronic in nature, in addition to those that are chronic. Conditions that we have identified since beginning OLDS surveillance include acute conditions such as chemical irritation/irritative bronchitis where an acute exposure results in a health provider visit and limited treatment, with resolution of symptoms. Other conditions covered include smoke inhalation from fires or burning material, infectious agents from exposures at work, and chemical pneumonitis. Chronic conditions are also included in this grouping, with other pneumoconioses, hard metal lung disease and coal workers' pneumoconiosis. A physician board-certified in internal and occupational/environmental medicine reviews all medical records to determine first, whether the condition is work-related and secondly, the nature of the illness and classification into general categories of disease. In cases where the work-relatedness of the exposure is unclear, additional medical records may be obtained and/or a patient interview completed. In future years of OLDS surveillance, we expect to identify additional categories of OLDS as we expand our efforts to identify the best reporting sources for these conditions.

Table 9 shows the distribution of diseases reported by year since surveillance for OLDS began in 2011. Over all the years, chemical irritation/irritative bronchitis and chemical pneumonitis were the most common conditions. Each year varies slightly in the types of conditions reported, in part related to the reporting sources within a given year. In 2011 and 2012, hospitals and Workers' Compensation reported 72% of the 139 cases, and 68% of the 191 cases, respectively. In 2013 and 2014, the Poison Control Center and hospitals reported 69% of the 162 cases, and 63% of the 150 cases, respectively.

The following statistics are based on the 150 cases of other lung diseases confirmed from 2014.

Similar to delays in reporting cases of silicosis, OLDS reports are incomplete from delays in hospital reporting. Table 10 shows the primary reporting source of the 150 persons confirmed with OLDS in 2014. In 2014, hospital reports were the primary source of identification of patients, with 78 (52%) of OLDS patients identified, followed by 38 (25%) reported through Workers' Compensation, 17 (11%) reported through the Poison Control Center, 15 (10%) reported by physicians and two (1%) reported through labs. There were no reports of other lung diseases identified through death certificates.

Disease Category

Eighty-four of the OLDS cases were classified as chemical irritation/irritative bronchitis, 11 had chemical pneumonitis, eight had asbestos-related disease, seven had smoke inhalation and associated symptoms, three had COPD, two had silo-related disease, and one each had acute respiratory distress syndrome (ARDS), allergies, hard metal lung disease, hypersensitivity pneumonitis, an infectious agent, metal fume fever or a sinus-related condition. An additional 28 had definite work-related respiratory illness that could not be classified more specifically (Table 9).

The following case narratives describe some of the exposures and symptoms related to the OLDS cases reported in 2014:

Chemical Irritation:

(1) A teenage male who worked for a restaurant inhaled chlorine fumes while cleaning the kitchen. He became lightheaded, developed a cough, and had burning eyes. His cough progressively worsened and he sought treatment at an emer-

DISEASE	YEAR REPORTED							
	2011		2012		2013		2014	
	#	%	#	%	#	%	#	%
Chemical Irritation/Irritative Bronchitis	63	45	80	42	104	64	84	56
Chemical Pneumonitis	10	7	20	10	19	12	11	7
Asbestos-Related Lung Disease	0	—	17	9	2	1	8	5
Smoke Inhalation	13	9	11	6	3	2	7	5
COPD	5	4	3	2	1	<1	3	2
Silo-Related Disease	0	—	1	<1	1	<1	2	1
Acute Respiratory Distress Syndrome	1	1	0	—	0	—	1	<1
Allergies/Allergic Rhinitis	2	1	10	5	2	1	1	<1
Hard Metal Lung Disease	1	1	2	1	3	2	1	<1
Hypersensitivity Pneumonitis	5	4	3	2	2	1	1	<1
Infectious Agent	4	3	10	5	3	2	1	<1
Metal Fume Fever	0	—	0	—	0	—	1	<1
Sinus-related	0	—	0	—	0	—	1	<1
Coal Workers' Pneumoconiosis	1	1	0	—	0	—	0	—
Other Pneumoconiosis	2	1	2	1	0	—	0	—
Lung Trauma	2	1	0	—	0	—	0	—
Respiratory Bronchiolitis	1	1	0	—	0	—	0	—
Lung Cancer	0	—	1	<1	0	—	0	—
Pneumothorax	0	—	1	<1	0	—	0	—
Pulmonary Embolism	1	1	0	—	0	—	0	—
Respiratory Illness NOS	28	20	30	16	22	14	28	19
TOTAL	139	100	191	100	162	100	150	100

gency department. He was admitted to the hospital, given a breathing treatment, and prescribed prednisone. (2) Ten individuals who worked at a water park as lifeguards were exposed to a chlorine gas leak at the pool. These individuals experienced a variety of symptoms, including chest tightness, cough and sore throat. They were examined on-site and also sought care from a physician. (3) A female in her 50s worked as a custodian at a school. She accidentally mixed two cleaners with bleach and immediately experienced chest tightness and shortness of breath. She was treated in the emergency department where she was prescribed prednisone and albuterol. (4) A male in his 20s who was working through a temporary employment agency was exposed to antifreeze and metal working fluids at the auto parts manufacturer where he was assigned. He developed wheeze, cough, chest tightness and shortness of breath, sought treatment at the emergency department and was prescribed prednisone and an inhaler.

Chemical Pneumonitis: A male in his 60s applied chemicals used to treat furniture fabric for stain resistance to a large number of furniture pieces in a confined area with poor ventilation. He developed a cough and dyspnea which worsened, and sought treatment at an emergency department.

Demographic Characteristics

Ninety-nine (66%) of the persons with OLDS were men; the other 51 (34%) were women. The average age of the OLDS cases was 40, ranging from 17 to 95 years of age.

TABLE 10 Reporting Source for OLDS Cases: 2014		
REPORTING SOURCE	#	%
Poison Control Ctr	17	11
Hospital	78	52
Workers' Comp	38	25
Physician Report	15	10
Laboratory	2	1
Death Certificate	0	—
TOTAL	150	99

Smoking Status

Twenty (38%) of the OLDS cases were current or ever smokers. Thirty-three (62%) individuals had never smoked cigarettes. There were 97 cases with unknown smoking status.

Type of Industry

Table 11 shows the primary type of industry where exposure occurred among the OLDS cases. The predominant industry where individuals were exposed was manufacturing with 24 cases (16%), followed by 12 cases (8%) working in arts and entertainment, eight (5%) each in construction and health care, seven (5%) each in retail trade and educational services, six (4%) each in transportation and warehousing and administrative and support and waste remediation services, and five (3%) in accommodation and food services.

MIOSHA Inspections-Industrial Hygiene Results

The 150 individuals with OLDS worked at 83 different facilities. Three inspections were performed in 2014 at two facilities, one based on an index case identified in 2014 and the other resulting in two inspections at the same facility from a case reported in 2013. The following describes the completed inspections.

Industrial Mold Manufacture: An inspection for cobalt exposure was based on a case of hard metal lung disease reported by a hospital in 2014. The MIOSHA inspector conducted air monitoring for cobalt, chromium, manganese dust, molybdenum, total particulates and nickel. Personal air

TABLE 11 Primary Industrial Exposure for OLDS Cases Reported in 2014			
2002 North American Industry Classification System		#	%
11	Ag, Forestry, Fishing & Hunting	2	1
21	Mining	1	1
22	Utilities	1	1
23	Construction	8	5
31-33	Manufacturing	24	16
44-45	Retail Trade	7	5
48-49	Transportation & Warehousing	6	4
51	Information	1	1
52	Finance & Insurance	2	1
56	Administrative & Support & Waste Management & Remediation Services	6	4
61	Educational Services	7	5
62	Health Care & Social Assistance	8	5
71	Arts, Entertainment, & Recreation	12	8
72	Accommodation & Food Services	5	3
92	Public Administration	4	3
00	Unknown	56	37
TOTAL		150	100

*Percent does not add to 100 due to rounding.

sampling for employees operating milling machines, surface grinders, band saws and lathes, and CNC machines found all time-weighted average exposures of employees sampled to be within OSHA permissible limits. There was no local exhaust ventilation used during these work activities. Employees were not required, and did not use, respirators. The MIOSHA inspection resulted in no citations.



The MIOSHA inspector recommended the company provide voluntary use N95 filtering face-piece respirators.

Overhead Crane Manufacturing: Two inspections were conducted at the same location in 2014, in response to a 2013 hospital report of a patient diagnosed with hard metal lung disease from exposure to cobalt. On the initial inspection, employees reported to the MIOSHA inspector that the workload was low compared to normal operations. Personal air monitoring of an employee machining aluminum with a lathe, found cobalt, respirable dust and total dust were within OSHA permissible limits or below the limit of detection. The company was cited for violation of Recordkeeping and Reporting of Occupational Injuries and Illnesses for failure to record potential work-related respiratory illnesses on the MIOSHA 300 log.

The second inspection at this same location was conducted five months later. The MIOSHA inspector conducted additional personal air monitoring on three employees machining aluminum, mild steel, and plastic on a lathe, mill, and band saw. Exposure to respirable dust, total dust and cobalt were all within OSHA permissible limits or below the limit of detection. The second inspection resulted in no citations.

Discussion

The main characteristics of the individuals reported during Michigan's 25+ years of silicosis surveillance are that they are elderly men who mainly worked in foundries in three counties. The age distribution is similar to that reported in the 1950s.[8] The older age of the patient (average year of birth, 1924) is secondary to the chronic nature of the disease and the typical long exposure to silica required to develop the disease (average 27 years of exposure to silica). However, we continue to receive reports of individuals with short-term exposure, who began work in the 1970s, 1980s, 1990s and two in the 2000s. Overall, 94 (8.6%) of 1,094 silicosis cases with known duration worked for less than 10 years (data not shown). One hundred seven (9.8%) of the 1,096 individuals with known decade of hire began work in the 1970s, 1980s, 1990s or 2000s; 28 of them had worked for less than ten years. Individuals with silicosis who began working since the 1970s were more likely to have done sandblasting than those who began working with

silica before 1970 (50% vs. 34%). Of the 29 people who first were exposed to silica since the 1980s, five worked in foundries, four worked in auto manufacturing, three did cement/masonry work, two were buffing and polishing metal, two worked in auto repair, two worked at a tool and die shop, one worked in mineral processing, one worked in a dental laboratory, one was a heavy equipment operator who did excavating, one was a painter, one was a painter/sandblaster, one worked as a miner in gold fields in the Southwest, one welded, one was in construction, one worked in a boiler fabrication shop, one worked for a small sandpaper manufacturing operation, and one worked at a bronze foundry.

African American men are over-represented (39%), reflecting previous hiring practices in foundries.[9] African American workers consistently had higher incidence rates of silicosis than their white counterparts in the counties where rates were compared between these groups (Table 4). Overall for the state, the average annual incidence of silicosis among African American workers was 7.3 per 100,000 versus 1.4 per 100,000 for white workers (a 5.2-fold greater incidence rate).

The individuals reported generally have advanced disease: 273 (23.5%) with progressive massive fibrosis and another 411 (36.5%) with advanced simple silicosis (category 2 or 3). Approximately two-thirds of the reported patients have reduced breathing tests, including both restrictive and obstructive changes. Obstructive changes, although more prevalent among individuals who had smoked cigarettes, were found in half of the individuals who never smoked cigarettes (Table 3). Twenty-one percent have had tuberculosis (TB) or a positive skin test indicating infection with the mycobacterium that causes TB. Despite the severity of their disease, 62% had not applied for Workers' Compensation.

The reports of Michigan silicotics having obstructive lung changes is consistent with published reports of increased chronic obstructive pulmonary disease (COPD) among silicotics, as well as among individuals without silicosis who have had silica exposure. [10] Individuals with silicosis are at risk of developing pulmonary hypertension, clinically significant bronchitis and chronic obstructive pulmonary disease.[11]

Hospitals are the primary reporting source of the patients identified through Michigan's surveillance system. Hospital discharge reporting is a more cost-effective method for identifying silica problem worksites than physician reporting, death certificates or Workers' Compensation data.[12] A comprehensive surveillance system for silicosis that combines all four reporting sources is as good, if not better, return for public health dollars invested as most other existing public health programs. [12]

Silicotics have an increased morbidity and mortality for malignant and non-malignant respiratory disease.[1,13] The increased risk for death is found both in patients who ever or never smoked cigarettes.[1] Individuals with silicosis also have an increased risk of developing connective tissue disease, particularly rheumatoid arthritis [14,15] as well as an increased risk of developing chronic renal disease, especially anti-neutrophilic cytoplasmic antibodies (ANCA) positive disease.[16,17,18]

The national employer-based surveillance system was not designed to count chronic diseases such as silicosis. We have previously estimated that there were 3,600 to 7,300 newly diagnosed cases of silicosis each year in the United States from 1987–1996.[2] Using the same methodology for the time period 1997–2003 we estimate there were 5,586–11,674 newly diagnosed cases of silicosis per year in the United States. Using an alternative approach with hospital discharge data we estimate there were 1,372–2,867 newly diagnosed cases of silicosis per year in the United States. Although the estimate based on death certificates is approximately four-fold greater than the one based on hospital discharge data, we believe that the true number of new cases of silicosis is closer to these larger estimates than using the actual number of death certificates that mention silicosis (~150 per year) or the Bureau of Labor Statistics estimate based on employer reporting, which in 1999 reported only 2,200 cases for all dust diseases of the lung, including asbestosis and coal worker's pneumoconiosis in addition to silicosis.

Industrial hygiene inspections reveal violations of the exposure standard for silica in 37% of the facilities where sampling was done. However, follow-up inspections of these same companies have shown a significant decrease in silica exposures. Companies not in compliance with the silica standard are requiring their workers to use powered air-purifying respirators or air-line respirators. However, because of an inadequate or absent

medical surveillance program in 89% of the facilities, there is no way to monitor the adequacy of these controls in terms of health outcomes.

Silicosis remains an ongoing problem in Michigan with former foundry workers continuing to develop severe disease. Michigan workers continue to be at risk of developing silicosis because of continued use of silica among abrasive blasters and inadequate controls in the construction industry, at foundries currently in operation, as well as in emerging industries with silica exposure including hydraulic fracturing [19] and engineered stone countertop fabrication. [20] Even without the development of silicosis, silica exposure is a risk factor for the development of lung cancer, connective tissue disease, tuberculosis and chronic obstructive pulmonary disease (COPD). [10,13,21] These risks justify tighter workplace controls for silica even if the number of new cases of silicosis continues to decline.

OSHA has proposed a new comprehensive standard for silica that includes a lower allowable level of silica in the air, worker education and medical surveillance. The standard is needed despite a decreasing trend of silicosis cases identified in Michigan, since this trend is more likely a product of more automated work practices with a smaller number of workers at risk than safer workplaces. The major decrease in cases of silicosis in Michigan can be attributed to the decrease in the number of foundry workers. There was a 75% decrease of foundry workers from 1973 to 1991 (Figure 6) and an 83% decrease in reported cases of silicosis from 1993 to 2011, factoring in a 20-year latency period for the development of silicosis. Additionally, the number of abrasive blasting companies using silica decreased 71% from 1995 to 2011 (2011 Annual Report—Tracking Silicosis and Other Work-Related Diseases in Michigan).

We are optimistic about the downward trend in reported silicosis cases but remain concerned about ongoing silica exposure and the increased risk of lung cancer, COPD, connective tissue disease, and kidney disease associated with silica exposure. The proposed comprehensive silica standard is needed in the foundry industry as well as for newer exposures in highway reconstruction, engineered stone countertop fabrication and hydraulic fracturing; it is too soon to see any ill health effects of these newer silica exposure sources.

Asbestos-related disease, both malignant and non-malignant, is the single most commonly diagnosed occupational lung disease. Asbestos-related disease is tracked from a variety of reporting sources in Michigan, including hospital inpatient discharge data, the 3rd Judicial Circuit Court, B-Readers and other physicians, death certificates, and an annual survey of Michigan B-Readers.

Targeting smoking cessation programs to individuals who work or used to work with asbestos should be a high priority. New guidelines for lung cancer screening from the U.S. Preventive Services Task Force have been released, that recommend low-dose CT scans for adults 55 to 80 years of age who have a 30-pack-year cigarette smoking history and currently smoke or quit smoking less than 15 years prior. The guidelines do not mention asbestos exposure as a criteria. Given the known synergism between cigarettes and asbestos in increasing the risk of lung cancer for either exposure alone, supports including individuals 50 to 80 with 20 years of asbestos exposure who ever smoked cigarettes regardless of whether they quit. For more information on the background for including asbestosis and asbestos exposure history in the determination for performing screening for lung cancer, see the PS News Summer 2015 newsletter (V26N3) at: www.oem.msu.edu. Similar data for silicosis and silica exposure is not available, but such screening should also be considered for these individuals.

The fourth year of OLDS surveillance resulted in the identification of a variety of respiratory illnesses from workplace exposures, as well as directing interventions through MIOSHA enforcement inspections. Future surveillance of OLDS cases will continue to identify workplaces where MIOSHA inspections are warranted. Other activities will focus on characterizing the nature and extent of the OLDS cases, and the identification of areas where education could benefit individuals who develop OLDS and to help prevent OLDS in others with similar workplaces and exposures.

References

- [1] Rosenman KD, Stanbury MJ, Reilly MJ. *Mortality Among Persons with Silicosis Reported to Two State-Based Surveillance Systems*. Scand J Work Environ Health 1995; 21 Supplement 2:73-76.
- [2] Rosenman KD, Reilly MJ, Henneberger PK. *Estimating the Total Number of Newly Diagnosed Silicotics in the United States*. Am J Ind Med 2003; 44:141-147.
- [3] Rosenman KD, Reilly MJ, Gardiner J. *Results of Spirometry among Individuals in a Silicosis Registry*. J Occup Environ Med 2010; 52:1173-1178.
- [4] NIOSH. *Work-Related Lung Disease Surveillance System (eWoRLD)*. <http://wwwn.cdc.gov/eWoRLD>. Accessed February 13, 2015.
- [5] Rosenman KD, Trimbath L, Stanbury M. *Surveillance of Occupational Lung Disease: Comparison of Hospital Discharge Data to Physician Reporting*. Am J Public Health 1990; 80:1257-1258.
- [6] Greenberg M. *History of Mesothelioma*. European Respiratory Journal 1997; 10:2690-2691.
- [7] Spirtas R, Heineman E, Bernstein L, Beebe GW, Keehn RJ, Stark A, Harlow BL and Benichou J. *Malignant Mesothelioma: Atributable Risk of Asbestos Exposure*. Occup Environ Med 1994; 51:804-811.
- [8] Trasko VM. *Some Facts on the Prevalence of Silicosis in the United States*. AMA Archives of Industrial Health 1956; 14:379-386.
- [9] Foote CL, Whatley WC, Wright G. *Arbitrating a Discriminatory Labor Market: Black Workers at the Ford Motor Company, 1918-1947*. J Labor Economics 2003; 21:493-532.
- [10] Hnizdo E, Vallyathan V. *Chronic Obstructive Pulmonary Disease Due to Occupational Exposure to Silica Dust: A Review of Epidemiological and Pathological Evidence*. Occup Environ Med 2003; 60:237-243.
- [11] Rosenman KD, Zhu Z. *Pneumoconiosis and Associated Medical Conditions*. Am J Ind Med 1995; 27:107-113.
- [12] Rosenman KD, Hogan A, Reilly MJ. *What is the Most Cost-Effective Way to Identify Silica Problem Worksites?* Am J Ind Med 2001; 39:629-635.
- [13] Davis GS. *Silica In Occupational and Environmental Respiratory Disease*. eds Harber P, Schenker MD, Balmes JR. St. Louis, Missouri: Mosby, 1996; 373-399.
- [14] Makol A, Reilly MJ, Rosenman KD. *Prevalence of Connective Tissue Disease in Silicosis (1985-2006)*. Am J Ind Med 2011;54:255-262.
- [15] Rosenman KD, Moore-Fuller M, Reilly MJ. *Connective Tissue Disease and Silicosis*. Am J Ind Med 1999; 35:375-381.
- [16] Rosenman KD, Moore-Fuller M, Reilly MJ. *Kidney Disease and Silicosis*. Nephron 2000; 85:14-19.
- [17] Gregorini G, Tira P, Frizza J, D'Haese PC, Elseviers MM, Nuyts GD, Maiorcar, DeBroe ME. *ANCA-Associated Diseases and Silica Exposure*. Clin Rev Allergy Immunol 1997;15:21-40.
- [18] Steenland K, Rosenman KD, Socie E, Valiante D. *Silicosis and End-Stage Renal Disease*. Scand J Work Environ Health 2002; 28:439-442.
- [19] Rosenman KD. *Hydraulic Fracturing and the Risk of Silicosis*. Clinical Pulmonary Medicine. 2014; 21:167-172.
- [20] Friedman GK, Harrison R, Bojes H, Worthington K, Filios M. *Notes from the Field—Silicosis in a Countertop Fabricator—Texas, 2014*. MMWR. February 15, 2015, Volume 64, Number 5:129-130.
- [21] NIOSH Hazard Review. *Health Effects of Occupational Exposure to Respirable Crystalline Silica*. Cincinnati, Ohio: DHHS (NIOSH)2002-129.